

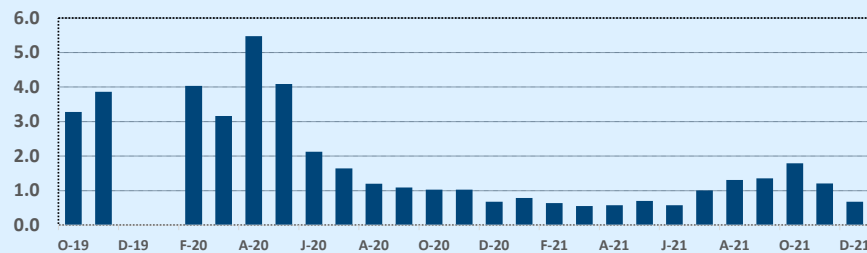
MLS Area LS

Listings	This Month			Year-to-Date		
	Nov 2021	Nov 2020	Change	2021	2020	Change
Single Family Sales	140	145	-3.4%	1,576	1,800	-12.4%
Condo/TH Sales	13	24	-45.8%	174	179	-2.8%
Total Sales	153	169	-9.5%	1,750	1,979	-11.6%
New Homes Only	9	15	-40.0%	128	229	-44.1%
Resale Only	144	154	-6.5%	1,622	1,750	-7.3%
Sales Volume	\$168,744,332	\$144,099,043	+17.1%	\$1,649,840,752	\$1,454,688,160	+13.4%
New Listings	66	100	-34.0%	2,015	2,165	-6.9%
Pending	98	40	+145.0%	222	1,859	-88.1%
Withdrawn	8	10	-20.0%	190	266	-28.6%
Expired	--	--	--	--	--	--
Months of Inventory	0.7	0.7	-0.1%	N/A	N/A	--

Average	This Month			Year-to-Date		
	Nov 2021	Nov 2020	Change	2021	2020	Change
List Price	\$1,107,131	\$866,590	+27.8%	\$924,248	\$748,730	+23.4%
List Price/SqFt	\$355	\$265	+34.0%	\$308	\$237	+30.0%
Sold Price	\$1,102,904	\$852,657	+29.3%	\$942,766	\$735,062	+28.3%
Sold Price/SqFt	\$353	\$263	+34.6%	\$315	\$234	+34.9%
Sold Price / Orig LP	98.3%	98.6%	-0.3%	102.9%	97.6%	+5.4%
Days on Market	32	48	-34.6%	24	60	-59.5%

Median	This Month			Year-to-Date		
	Nov 2021	Nov 2020	Change	2021	2020	Change
List Price	\$775,000	\$668,900	+15.9%	\$729,000	\$599,000	+21.7%
List Price/SqFt	\$303	\$235	+28.9%	\$275	\$212	+29.7%
Sold Price	\$782,600	\$660,000	+18.6%	\$750,000	\$590,000	+27.1%
Sold Price/SqFt	\$304	\$231	+31.7%	\$286	\$211	+35.6%
Sold Price / Orig LP	100.0%	100.0%	+0.0%	101.0%	98.0%	+3.1%
Days on Market	12	11	+9.1%	7	22	-68.2%

Months of Inventory - Last Two Years



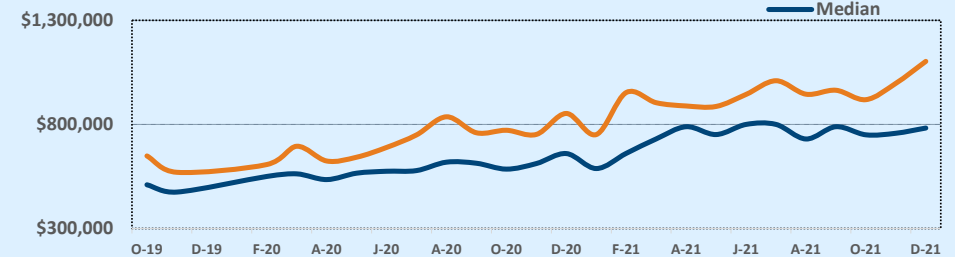
Residential Statistics

Independence Title

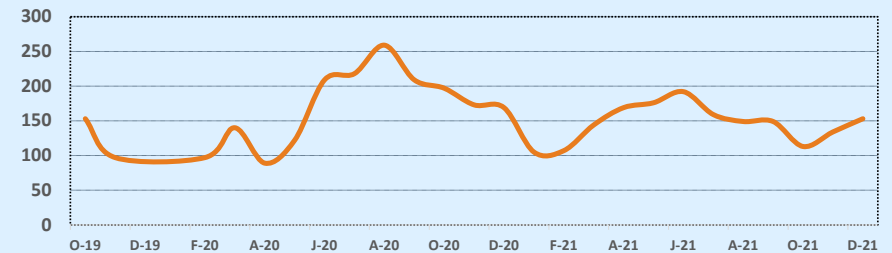
November 2021

Price Range	This Month			Year-to-Date		
	New	Sales	DOM	New	Sales	DOM
\$149,999 or under	--	--	--	2	1	52
\$150,000- \$199,999	--	--	--	1	--	--
\$200,000- \$249,999	--	--	--	8	8	42
\$250,000- \$299,999	--	1	7	18	12	40
\$300,000- \$349,999	--	4	15	26	29	40
\$350,000- \$399,999	2	2	75	53	40	18
\$400,000- \$449,999	3	3	24	79	65	13
\$450,000- \$499,999	4	3	23	110	78	12
\$500,000- \$549,999	4	6	48	108	112	19
\$550,000- \$599,999	10	8	28	166	135	18
\$600,000- \$699,999	14	25	20	265	235	19
\$700,000- \$799,999	13	25	19	275	258	23
\$800,000- \$899,999	10	16	34	209	171	29
\$900,000- \$999,999	5	8	39	143	131	23
\$1M - \$1.99M	21	26	32	415	380	23
\$2M - \$2.99M	10	3	27	79	63	46
\$3M+	4	4	59	58	32	100
Totals	66	153	32	2,015	1,750	24

Average & Median Sales Price - Last Two Years



Number of Sales - Last Two Years



Based on information from the Austin Board of REALTORS® (alternatively, from ACTRIS). Neither the Board nor ACTRIS guarantees or is in any way responsible for its accuracy. The Austin Board of REALTORS®, ACTRIS and their affiliates provide the MLS and all content therein "AS IS" and without any warranty, express or implied. Data maintained by the Board or ACTRIS may not reflect all real estate activity in the market.